



Brazilian Technology
Success in Europe

TECHNICAL SPECIFICATIONS MicroCPD Series 200 & 210

Intel Processor Core Duo de 2.3 a 3.4Mhz
RAM 512MB à 2GB RAM
120Gb à 750Gb SATA (Real 1 optional) of Hard Disk

Network Protocols:
TCP/IP
NetBEUI
NetBIOS
NAT

Network File Protocols:
Microsoft (CIFS/SMB)
Apple (AFP)
File Transfer (FTP)

IPSec:
Microsoft (IPSec)
Cisco (IPSec)
PAP (Apple)
NTP (Network Time Protocol)
Microsoft Internet Authentication Service (IAS)
L2/L3/F3 protocols de impressões

Keys Change: Manual ou com protocolo IKE
Autenticação: Keys, Shared secret, RSA, X.509
grupo 2, group 1024-bit

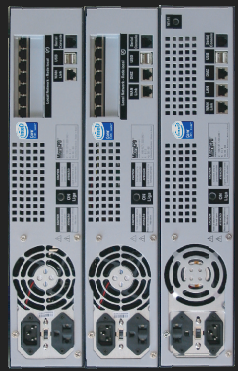
Cryptography: DES, AES, Blowfish, Twofish
Autenticação: HMAC - SHA

Network Clients:
Microsoft Windows, IBM i, Netware, Linux, Solaris, Unix, Apple Macintosh (OS 9 e OS X)

Network Standard:
IEEE 802.3, 10/100/1000 Base-T Ethernet
IEEE 802.3x Flow Control
IEEE 802.3x Priority Queue
ANSI X3.263-2003 10Gb auto-negotiation
10/100/1000 Base-Tx Ethernet

Interfaces:
LAN 2xG & 4x10;
LAN 1x10/100 & 1x1000 Base-Tx Ethernet
DMZ (210);
DMZ (210G & GW);
WAN Internet;
WAN Internet;
Console (110GW);
USB

LCD (Display):
System Version, Uptime
CPU Charge
System charge Graph
Backup
Download
Download e upload status
Interface traffic



MicroCPD do Brasil Ltda.
Rua 11 - 2670
13500-240 Rio Claro - SP - Brasil
Tel. (19) 3524-9311 / (19) 3523-2556
Fax (19) 3534-8658
<http://www.microcpd.com>
e-mail: contato@microcpd.com

info EXAME
Better technical
evaluation between
all the tested
brazilian products
08/2004

Representative:



IP Types:
LAN:
DMZ (Série 210);
WAN:
System Administration:
Monitoring:
Translations:
Physical dimensions:
Work temperature:
Power supply:
Typical consumption:
Warranty:
TECHNICAL LIMITATIONS*
Between 40 and 70 network users when using all the MicroCPD resources (e-mail, proxy, internet, ftp, antivirus, firewall and VPN)
VPN:
IPSec - AES -> 5 MB/s - 40 MB/s;
IPSec - AES -> 30 MB/s - 60 MB/s;
* These limits are not absolute, the products should support higher loads, but these values are guaranteed by MicroCPD.
Remarks: MicroCPD reserves the right to modify specifications and characteristics at any time. The pictures are merely illustrative and do not create a contractual binding.
Pal. Rio, BR2003MU028720

Server DHCP
IP file
Client DHCP
DHCP
IP file

100% Interface Web

Web proxy
SMTP
E-mail alerts
LCD Panel Display

English, Portuguese, French

428 (W) X 350 (D) X 89 (H) mm
20 rack 1U*

0 - 45 C

100-140 - 200-240V, 50/60 Hz

62-75W

3 mos. (hardware)

Between 40 and 70 network users when using all the MicroCPD resources (e-mail, proxy, internet, ftp, antivirus, firewall and VPN)

IPSec - AES -> 5 MB/s - 40 MB/s;
IPSec - AES -> 30 MB/s - 60 MB/s;

* These limits are not absolute, the products should support higher loads, but these values are guaranteed by MicroCPD.

Remarks: MicroCPD reserves the right to modify specifications and characteristics at any time. The pictures are merely illustrative and do not create a contractual binding.

Pal. Rio, BR2003MU028720

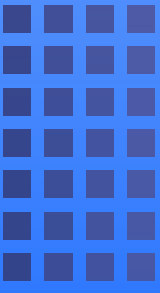


MultiAppliance
Tudo-em-um All-in-one Tout-en-un

Série 200

Série 210

Série 210G



Simple
intelligent
innovator

The MicroCPD was the solution for
all our management, distribution
and billing projects in the Internet
in São Paulo, which is the largest
Athens
Trade Show center, which is the largest



- Firewall
- E-mail gateway de Anti-Virus
- Web Proxy with content filter
- Printer server
- Generation of PDF files
- High performance file server
- Documents full text search
- Network control in real time

- Sophisticated Reports and controls
- Shared corporate calendar
- Corporate e-mail server
- VPN remote access
- Anti-Spam e-mail gateway

MicroCPD is highly trustworthy, safe and manageable for being
the heart and the foundation of all the corporate information
technology infrastructure.

MicroCPD
The all-in-one turn-key IT infrastructure